

Safety Test Hood

HPH 1 - HPH 2 - HPH 5 - HPH 6



The test hoods HPH 1,2,5 and 6 are ideal for the high-voltage test up to 10 KV. The case is manufactured of highly-insulating, grey synthetic material, which is welded all round. Closing of the light-weight, hinged, acrylic-glass hood is monitored via a safety switch. An exchangeable baseplate inside the test hood makes adaptation for different test objects possible. The adapter plate can also have built-on accessories (e.g., test needles) extending into the available bottom space.

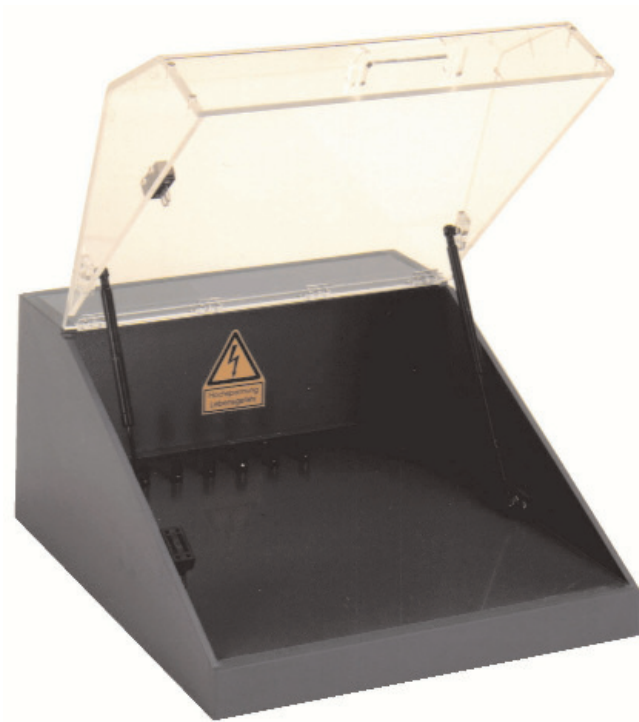
The hood cover is of transparent acrylic glass, so the test object is always visible and can, thus, also be optically evaluated, during the test.

Technical Data					
		HPH1	HPH2	HPH5	HPH6
		mm	mm	mm	mm
Outer dim.	B	500	445	690	690
	H	370	489	370	485
	T	600	853	653	853
Inner dim.	B	460	404	666	666
	H	260	405	300	415
	T	420	740	550	750
Adapter	B	250	250	490	490
	H	10	10	10	10
	T	300	300	180	280
Bottom space		70	40		
Mat. thickness :PVC 10 mm / Acryl 8 mm					

Options for HPH 1, 2, 5 and 6

No.	Description options
H01	Safety switch with locking device 24 VDC
H02	Safety switch with locking device 230 VAC
H03	Safety lamps red and green mounted
H04	Interface connector B16
H05	Interf. connector, multicontact without inserts
H06	Euro plug
H07	Pneumatic built in euro plug
H08x	Interface connector pole terminals x=quantity
H09	Pneumatic interface to lift and lower a cylinder (incl. pressure reducer)
H10	Additional adapter plate
H15	19" Version (only HPH1 and 2)
Options H 01, 02, 04, 05, 06, 08 do not include wiring; this can be optionally offered.	

Safety Test Hood HPH 3



The test hood HPH 3 is designed purely as a desk version. It is ideal for tests with dangerous voltages and, in particular, for the high-voltage test up to 10 KV. The test hood HPH 3 can also be used for mechanical tests in which shock-hazard protection is necessary. The case is manufactured of highly-insulating, grey synthetic material, which is welded all round. The acrylic-glass hood is equipped with a safety monitoring device. An internal, exchangeable adapter plate accommodates the different test object adapters.

The test hood HPH 3 is ideal for very wide and deep test objects. The opening and closing of the acrylic-glass hood is assisted by means of two gas-pressure shock absorbers.

Technical Data HPH3		
mm		
Outer dim.	B	600
	H	310
	T	690
Inner dim.	B	580
	H	250
	T	670
Adapter	B	250
	H	10
	T	300
Bottom space		40
Mat. thickness	:PVC 10 mm / Acryl 8 mm	

Options for HPH 3	
No.	Description option
H01	Safety switch with locking device 24 VDC
H02	Safety switch with locking device 230 VAC
H03	Safety lamps red and green mounted
H04	Interface connector B16
H05	Interf. connector, multicontact without inserts
H06	Euro plug
H07	Pneumatic built in euro plug
H08x	Interface connector pole terminals x=quantity
H09	Pneumatic interface to lift and lower a cylinder (incl. pressure reducer)
H10	Additional adapter plate
Options H 01, 02, 04, 05, 06, 08 do not include wiring; this can be optionally offered.	

EAQ

AC
SOURCES

EDQ

DC
SOURCES

ExL

ELECTRONIC
LOADS

EST

SAFETY TEST
UNITS

ERS

RELAY
SCANNER

EE

TEST SYSTEMS

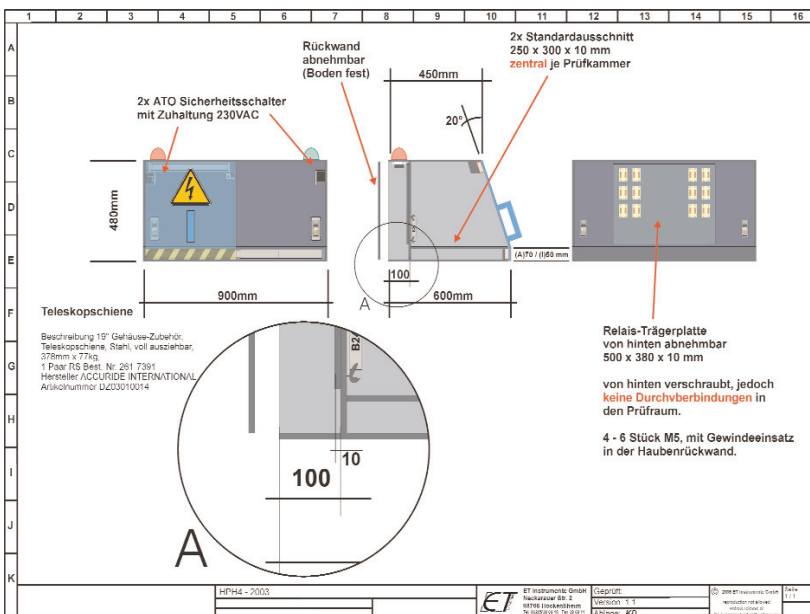
Safety Test Hood HPH 4



The tandem test hood HPH4 allows test objects to be simultaneously tested and contacted. While testing is carried out in one chamber, the test object can be removed from the other chamber and a new one can be contacted. The acrylic-glass hood is simply pushed from one chamber to the other. A space behind the chambers allows the installation of, e.g., high-voltage relays. One exchangeable adapter plate is provided per chamber. The hood can be installed not only on a desk, but is also designed to allow installation in a double 19" rack.

The standard basic dimensions, i.e., height (vertical-module grid) and depth (50 mm grid), of the tandem test hood HPH 4 can be optionally modified.

Dimension HPH4		
		mm
Outer dim.	B	900
	H	480
	T	600

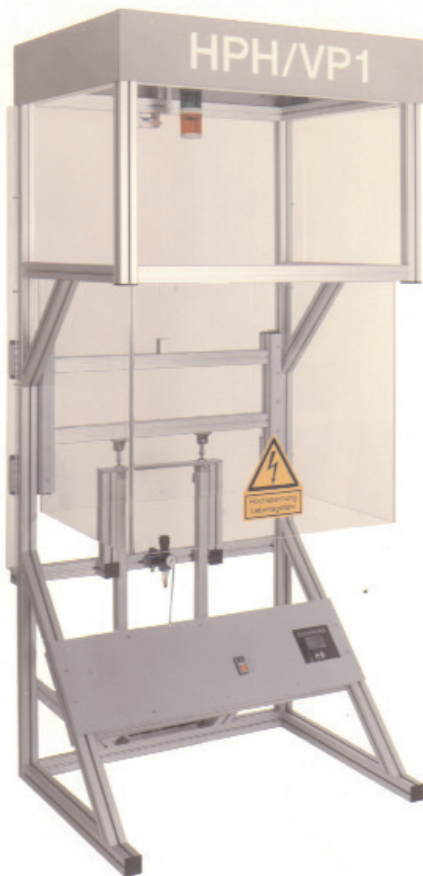


Options for HPH 4

No.	Description options
H01	Safety switch with locking device 24 VDC
H02	Safety switch with locking device 230 VAC
H03	Safety lamps red and green mounted
H04	Interface connector B16
H05	Interf. connector, multicontact without inserts
H06	Euro plug
H07	Pneumatic built in euro plug
H08x	Interface connector pole terminals x=quantity
H09	Pneumatic interface to lift and lower a cylinder (incl. pressure reducer)
H10	Additional adapter plate
H11x	Greater depth. interior x = dimension in mm
H12x	Greater height interior x = dimension in mm

Options H 01, 02, 04, 05, 06, 08 do not include wiring; this can be optionally offered.

Safety Test Hood HPH/VP 1



The test hood HPH/VP 1 is a pneumatically-controlled protective hood and can either be integrated in a conveyor belt system or employed as an individual job-site solution. The hood, the structure of which is in aluminium-profile, is totally insulated in the testing area by means of an acrylic-glass hood. The lifting and lowering of the hood is pneumatically controlled via linear guides accommodated on ball bearings. The hood is closed by means of two-hand operation; it can also be opened via an external signal. The test hood is available with different dimensions. An integrated bench is available as optional equipment, also.

The pneumatic and SPC-controlled safety test hood HPH/VP 1 offers perfect technology combined with absolute safety.

Technical Data HPH/VP1

Outer dim.	:Breite	1000 mm
	:Höhe	2350 mm
	:Tiefe	800 mm
Inner dim.	:Breite	860 mm
Chamber	:Höhe	750 mm
	:Tiefe	660 mm
Mat. thickness:	Acryl 10 mm	
Safety	:Safety switch, emergency OFF safety circuit, two-hand operation hood safety interlock	
Lamps	:Safety lamps red and green	
Power Input	:230 V \pm 10% / 50 Hz	
Control	:SPS	
Logistic signals	:Hood state, lift hood	
Pneumatic	:Incl. pressure reducer, input min. 6 bar	

Options for HPH / VP1

Nr.	Description Options
H04	Interface connector B16
H05	Interf. connector, multicontact without inserts
H06	Euro plug
H07	Pneumatic built in euro plug
H08x	Interface connector pole terminals x=quantity
H09	Pneumatic interface to lift and lower a cylinder (incl. pressure reducer)
H10	Additional adapter plate
H11x	Greater depth. interior x = dimension in mm
H12x	Greater height interior x = dimension in mm
H13x	Greater width interior x = dimension in mm
H14x	Integrated bench
Options H 01, 02, 04, 05, 06, 08 do not include wiring; this can be optionally offered.	